



## MEETINGS IN STYLE

Plan your next meeting at Hatfield's most iconic building. After a multi-million pound refit, The Comet Hotel has been refurbished for the modern age, bringing Hatfield a truly fabulous hotel, meeting and residential conference destination. Let your next meeting be surrounded by luxurious modernity, period features and refined glamour.

### MEETING FACILITIES

We offer a choice of room hire and day delegate rates depending on your meeting needs. All our meeting rooms have natural daylight and air conditioning and we can also supply specialist av equipment if required.

### MEETING EQUIPMENT

- Flipcharts
- Built in monitor for laptop presentations
- Pens and paper
- Additional equipment on request

### DINING

- Element Bar & Kitchen offers casual all day dining
- Private dining options available
- Corporate events available on request

### SERVICES

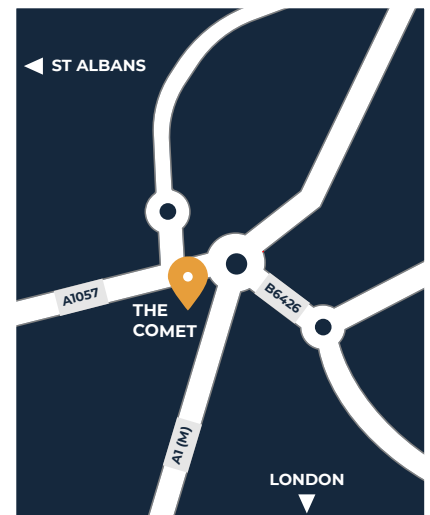
- Complimentary on-site car parking for 80 spaces
- Mobile check-in and check-out
- Private hire of Element Bar & Kitchen
- Easy access for set up
- Photocopying and faxing
- Meeting host

### NEARBY RECREATION

- Hatfield House
- Mile Green Golf Club
- The Galleria Shopping Centre
- Complimentary access to Hertfordshire Sports Village
- Team building

### LOCATION

- Luton Airport - 18.5 miles
- Heathrow Airport - 30 miles
- Stanstead Airport - 37.5 miles
- A1(M) - 1 mile



### DRIVING DISTANCE

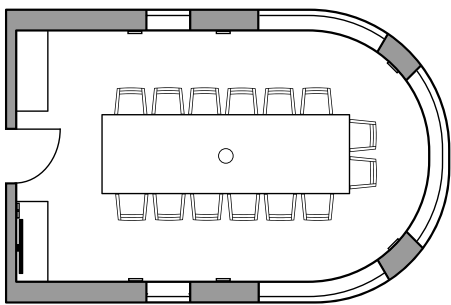
- London (West End) - 21 miles
- Aylesbury - 31 miles
- Milton Keynes - 39 miles
- Chelmsford - 43.5 miles
- Guilford - 50 miles
- Oxford - 58.5 miles



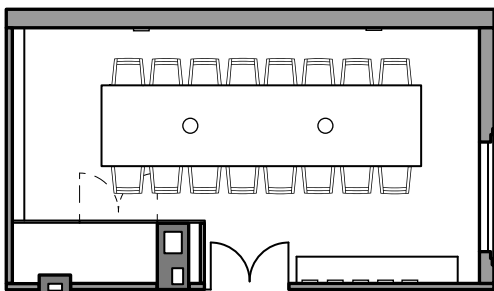
## MEETINGS IN STYLE

### ROOM SIZE & CAPACITIES

**The Havilland:** Covering 31 m<sup>2</sup>, this room is situated on the first floor at the front of the building and can accommodate up to 16 people in a boardroom setting.

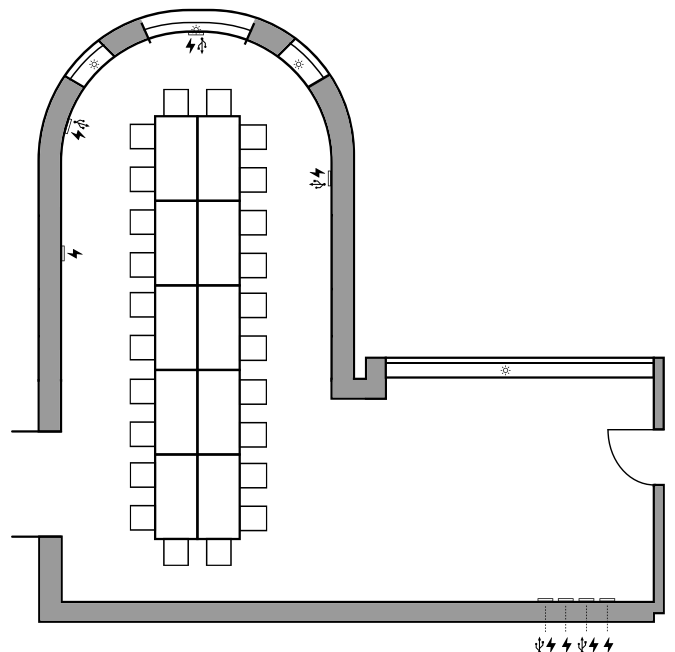


**The Grosvenor:** At 37 m<sup>2</sup>, this room can accommodate up to 20 seated guests in a boardroom setting on the ground floor.



**Botanical Room:** At 85 m<sup>2</sup>, this room is situated on the first floor and is bathed in natural light. Botanical Room can accommodate up to:

- 24 people boardroom style
- 20 U-shape style
- 24 hollow square style
- 48 cabaret style
- 50 theatre style





## DAY DELEGATE PACKAGES

We understand the importance of getting things right. Our meeting rooms combine comfort, elegance and practicality to ensure that your business event, meeting or conference runs perfectly. Bathed in natural daylight, our event spaces boast all of the comfort and technology for an unparalleled meeting experience. All prices are per person and include VAT, minimum numbers of 8.

### ALL PACKAGES INCLUDE

- Hire of the meeting room
- Complimentary wi-fi
- A nominated meeting host
- Monitor and laptop connections
- Paper and pens
- Flip-chart, pad and pens
- Chilled still and sparkling water
- Icebreaker kit
- Complimentary car parking for all attendees
- Upgraded bedroom for the meeting organiser if staying overnight (subject to availability)



### PACKAGE 1: FROM £40

- Tea/Coffee on arrival
- Mid-morning Tea/Coffee and cookies
- Working sandwich lunch including a selection of sandwiches / wraps and either fries or wedges
- Afternoon Tea/coffee and cake

### PACKAGE 2: FROM £45

- Rolling tea/coffee throughout
- Pastries on arrival
- Cookies mid-morning
- Afternoon cake
- Sweet station
- Working buffet lunch: 8 items from Chef's selection served with a fresh fruit bowl

### PACKAGE 3: FROM £55

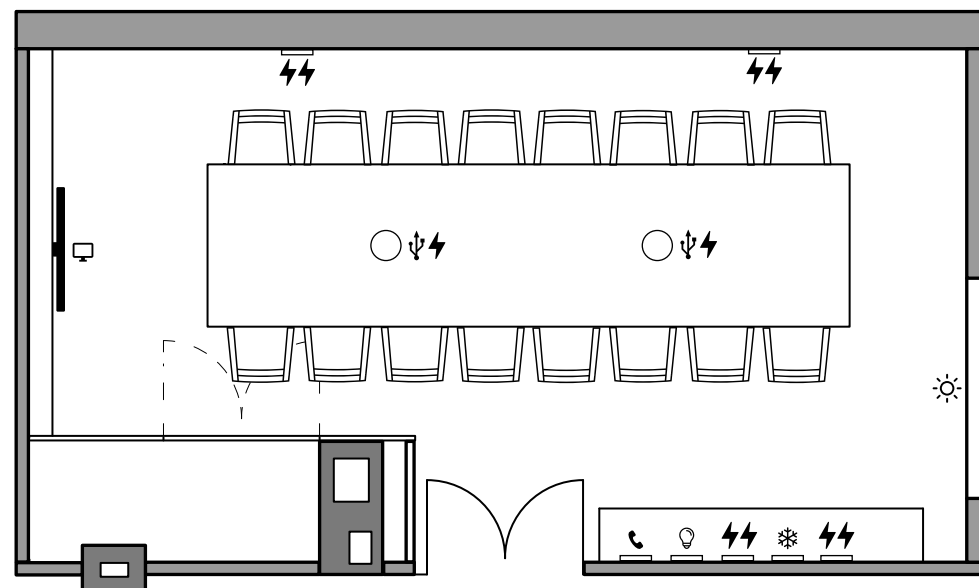
- Rolling tea/coffee and fruit juice throughout
- Sweet station and fruit bowl
- A selection of sausage, bacon, fried egg baps, croissants and preserve and fruit smoothies on arrival
- A selection of cookies and pasties mid-morning
- Afternoon homemade snack and fruit kebabs
- A hot and cold buffet lunch served in the restaurant. Includes homemade 'soup of the day', a choice of hot and cold main course dishes served with salad, vegetables & side dishes, plus a selection of desserts



## THE GROSVENOR

### INFO GRAPHIC CHART

- ⚡ Electrical socket
- 🔌 USB socket
- ☀️ Window with blinds
- ❄️ A/C control
- 📺 Monitor
- 💡 Lights
- ☎️ Telephone

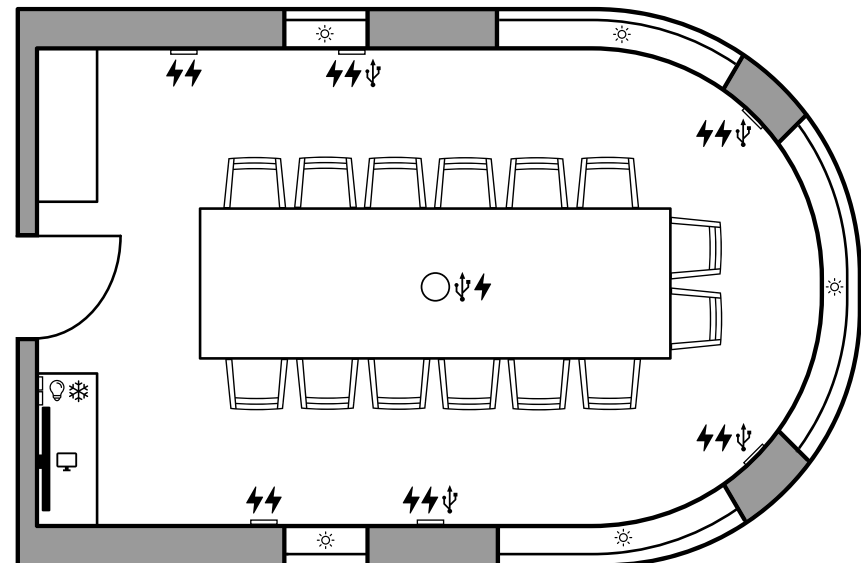




## THE HAVILLAND

### INFO GRAPHIC CHART

- ⚡ Electrical socket
- 🔌 USB socket
- ☀️ Window with blinds / curtains
- ❄️ A/C control
- 📺 Monitor
- 💡 Lights

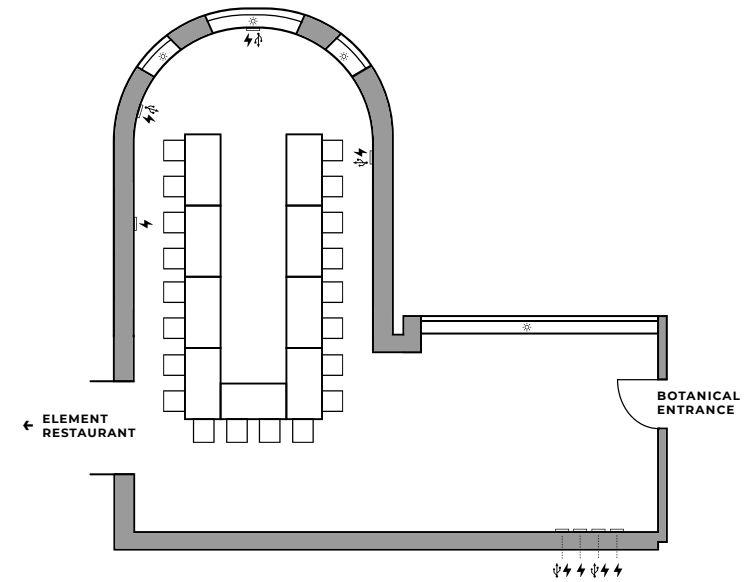
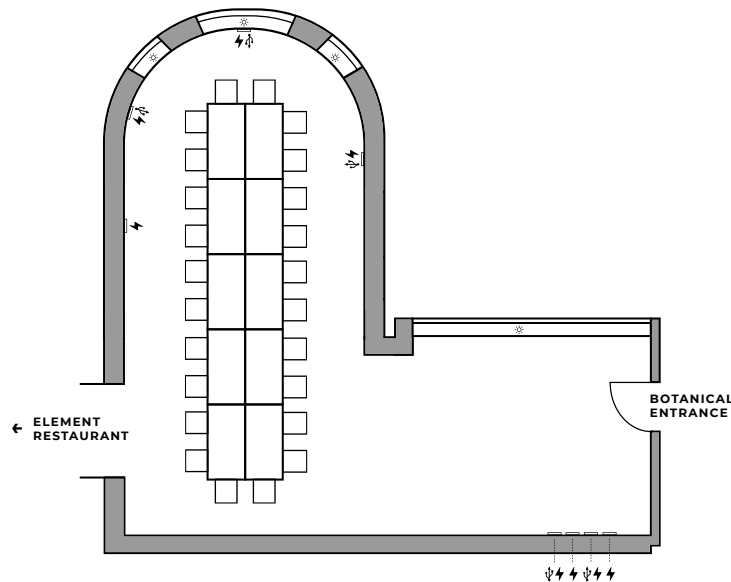




## BOTANICAL ROOM

### INFO GRAPHIC CHART

- ⚡ Electrical socket
- 🔌 USB socket
- ☀️ Window with blinds / curtains
- ❄️ A/C control
- 📺 Portable Monitor
- 💡 Lights





## BOTANICAL ROOM

### INFO GRAPHIC CHART

- ⚡ Electrical socket
- 🔌 USB socket
- ☀️ Window with blinds / curtains
- ❄️ A/C control
- 📺 Portable Monitor
- 💡 Lights

